

COATINGS THICKNESS GUIDE

HEATLOK SOY 200 PLUS & DEMILEC APX Do Not Require An Ignition Barrier



In Lieu Of A Prescriptive Ignition Barrier

Product	Wet Mils	Dry Mils	Coverage Rate
SEALECTION 500	5 mils	3 mils	320 ft ² /gal
SEALECTION Agribalance	9 mils	5 mils	175 ft ² /gal



In Lieu Of A Prescriptive Thermal Barrier

Product	Wet Mils	Dry Mils	Coverage Rate
HEATLOK SOY 200 PLUS	17 mils	11 mils	92 ft ² /gal
DEMILEC APX	17 mils	11 mils	85 ft ² /gal
SEALECTION 500	17 mils	11 mils	85 ft ² /gal
SEALECTION Agribalance	23 mils	15 mils	83 ft ² /gal

For Additional Information Refer to the Product Technical Data Sheet and ESR.



Demilec
3315 E. Division Street
Arlington, TX 76011
(817) 640-4900
(877) DEMILEC (336-4532)
Info@Demilec.com
www.DemilecUSA.com

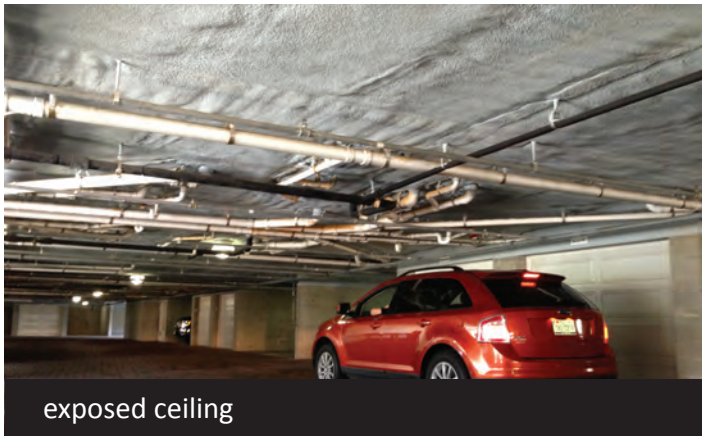
THERMAL BARRIERS

IBC 2603.4 / IRC 314.4

All spray foam insulation must be separated from the interior of the building by a 15 minute thermal barrier. Also, attics and crawl spaces that are determined to be “used for storage” also require thermal barriers.



attic - “used for storage”



exposed ceiling



above drop ceiling

IGNITION BARRIERS

IBC 2603.4.1.6 / IRC R314.5.3

Attics and crawl spaces that are determined to be “access for utilities only” require an ignition barrier.

SEALECTION 500 and SEALECTION Agribalance require ignition barriers in attics accessed for utilities only.

HEATLOK SOY 200 PLUS and DEMILEC APX passed the NFPA 286 Appendix X without any coatings and therefore require no additional coatings in attics accessed for utilities only.



attic - “access for utilities only”



closed crawl space

**FOR MORE QUESTIONS CONTACT
YOUR DEMILEC REPRESENTATIVE OR
THE DEMILEC ENGINEERING DEPT.
(817) 640-4900**